

eX707M | Web HMI - Tech Note

7" TFT Rugged Industrial Web-based HMI

- Chromium based HTML5 Browser
- Easy to use browser setting application
- 7" TFT color display, resolution 800x480 pixel
- Dimmable LED backlight
- Projected capacitive touchscreen. True glass design.
- Multitouch operation
- Operating Temperature -20°C to +60°C
- IECEx, ATEX, DNV-GL, cULus, cULus: Class 1 Div 2



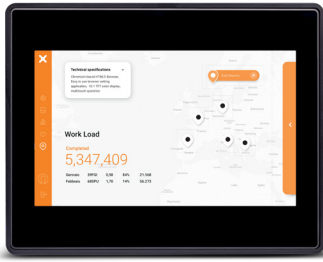
Highlights

eX700M Web HMI products combine state-of-the-art connectivity features and top browsing performance in a great design. They are the ideal choice for all demanding IoT edge applications in factory, marine and building automation where powerful and performing HTML5 web browser is needed.

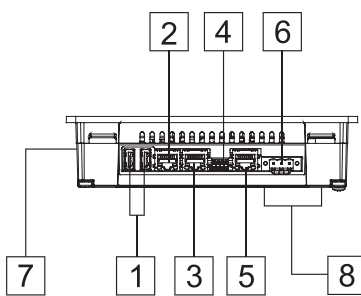
The glass projected capacitive touchscreen and the brilliant 7 inch widescreen display with resolution of 800x480 guarantee great optical performance; with the support of multitouch gesture programming they can create the most natural human interfaces.

eX700M Web HMI products include a Chromium based HTML5 browser supporting kiosk mode operation. Supports Corvina Cloud secure connectivity with full network separation.

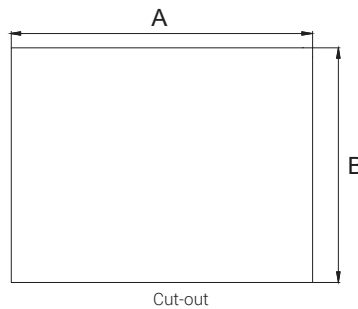
eX707M - Technical Data



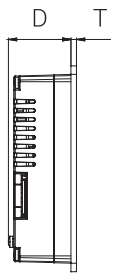
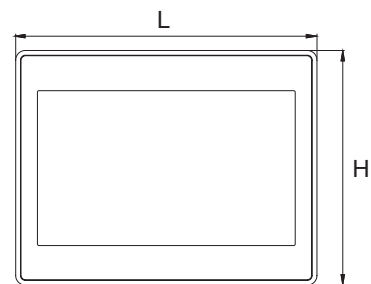
System Resources	
Display - Colors	7 TFT 16:9 LED - 16M
Resolution	800x480 WVGA
Brightness	500 cd/m2
Dimming	Yes
Touchscreen	True Glass Projected Capacitive, Multitouch
CPU	64-bit RISC quad core - 1.6GHz
Operating System	Linux
Flash	4 GB
RAM	2 GB
FRAM	64 KB
Real Time Clock, RTC Back-up	Yes
Interface	
Ethernet port	3 (port 0 - 10/100/1000, port 1 - 10/100, port 2 - 10/100)
USB port	2 (Host V2.0, max. 500 mA)
Serial port	1 (RS-232, RS-485, RS-422, software configurable). Max 3 serial ports using plug-in modules.
SD card	Yes
Buzzer	Yes
Expansion	2 slot for plug in modules
Ratings	
Power supply	24 Vdc (10 to 32 Vdc)
Current Consumption	0.7 A at 24 Vdc (max.)
Battery	Rechargeable Lithium battery, not user-replaceable
Input Protection	Electronic
Environment Conditions	
Operating Temperature	-20° to +60 °C (vertical installation). Plug-in modules and USB devices may limit max temperature to +50 °C
Storage Temperature	-20°C to +70°C
Operating / Storage Humidity	5-85% RH, non condensing
Protection Class	IP66 (front), IP20 (rear) Type: 12, 4X
Operating Height	0 to 2000 m
Dimensions and Weights	
Faceplate LxH	187x147 mm (7.36x5.79")
Cutout AxB	176x136 mm (6.93x5.35")
Depth D+T	47+8 mm (1.85+0.31")
Weight	1.5 Kg
Approvals	
CE	Emission EN 61000-6-4, Immunity EN 61000-6-2 for installation in industrial environments
UL	cULus: UL61010-1 / UL61010-2-201
UL	cULus: Class 1 Div 2
IECEX	Zone 2/22: Ex nA IIC T5 Gc, Ex tc IIIC T95°C Dc
ATEX	Zone 2/22: II 3 G Ex nA IIC T5 Gc, II 3 D Ex tc IIIC T95°C Dc
DNV	Yes



- 1 USB ports 1 and 2
- 2 Ethernet port 2 (10/100 Mb)
- 3 Ethernet port 1 (10/100 Mb)
- 4 Serial port



Cut-out



- 5 Ethernet port 0 (10/100/1000 Mb)
- 6 Power supply
- 7 SD Card slot
- 8 2 Expansion slots for plugin modules

Ordering Information

Model	Part Number	Description
eX707M	+EX707MU5PW	Web HMI - 7 widescreen TFT color with multitouch projected capacitive touchscreen. 3 Ethernet ports, 1 serial port, 2 USB ports.